

## PHONE & MAIL ACCESS

- Angeline's.....206.436.8650  
2030 3rd Ave, Seattle  
*Daily, 8am-6pm. Offers telephone and computer use.*
- Bread of Life Mission.....206.682.3579  
97 S Main St, Seattle  
*Register for mail W-F, 2-4pm. Mail pick up Tu-F, noon. Provides a*
- Compass Housing Alliance.....206.357.3200  
210 Alaskan Way S, Seattle  
*M W F, 9am-4:30pm; Tu Th, 9am-3pm; Sa, 9:30am-1pm. Provides mail services and receives messages for clients. Messages are posted to the lobby message board for 5 days.*
- Compass Housing Alliance - Adult Service Center.....206.357.3190  
2015 3rd Ave, Seattle  
*Daily, 10:30am-7pm. Offers free local phone usage.*
- DESC.....206.464.1570 ext 3033  
505 3rd Ave, Seattle  
*M-F, 7:30am-5pm. Provides mail service and telephone use.*
- Elizabeth Gregory Home.....206.523.6031  
1604 NE 50th, Seattle
- Gethsemane Community Services.....206.682.3620  
911 Stewart St, Seattle  
*Tu Th, noon-3pm. Provides a temporary mailing address.*
- Lazarus Center.....206.623.7219  
416 2nd Ave Ext S, Seattle  
*Daily, 11am-6:30pm. Ages 50+. Provides free use of phone for local calls. Posts messages on message board. Provides temporary address.*
- Mary's Place.....206.621-8474  
314 Bell St, Seattle  
*M-F, 7am-3:30pm. Provides computer use, mail and phone services.*
- Solanus Casey Center.....206.223.0907  
1008 James St, Seattle  
*M W F, 1-4pm. Offers telephone use during drop-in hours.*

## FREE VOICEMAIL

- Solid Ground.....206.694.6771  
1501 N 45th St, Seattle  
*Provides voicemail services to people who are homeless or without a phone and on DSHS assistance, as well as inmates who need to communicate with their attorneys.*

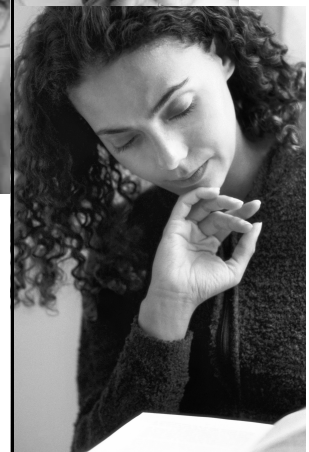
## HOT MEALS

- Angeline's.....206.436.8650  
2030 3rd Ave, Seattle  
*Meals daily at 7:20am, 8:10am, 11:30am, 12:30pm, and 3pm.*
- Bread of Life Mission.....206.682.3579  
97 S Main, Seattle  
*Lunch: M-F, Noon. Dinner registration: M-Sa, 10:30am-4:30pm. Breathalyzer/Dinner: 5:30pm. Chapel required at 6:30pm.*
- Cathedral Kitchen.....206.264.2091  
907 Columbia, Seattle  
*Meal tickets at 3:30pm. Dinner: M-F, 4:30-5pm.*
- El Centro de la Raza.....206.957.4634  
2524 16th Ave S, Seattle  
*M-F, noon-1pm. Serves anyone in need.*
- Mary's Place.....206.621.8474  
314 Bell St, Seattle  
*Breakfast: Sa, 7:30am. Lunch: Sa, 12:15pm. Serves women only, with or without children.*
- Millionair Club.....206.728.5627  
2515 Western Ave, Seattle
- Outdoor Meal Site.....6th and Columbia, under I-5  
*Dinner: M-Th, 7:30pm.  
Breakfast: M-F, 8am.  
Hot Meal: M-F, 1pm.  
Hot Meal: F, 6:30pm.  
Sack Lunch: Sa, noon.  
Hot Meal: 1st, 3rd, 5th Sa, 4pm.  
Hot Meal: 2nd Sa, 5pm.  
Lunch or Hot Meal: 4th Sa, 2pm.  
Hot Meal: 4th Sa, 6:30pm.  
Hot Meal: 1st, 2nd, 4th, 5th Su, 1pm.  
Hot Meal: 3rd Su, noon.  
Cold Lunch: 2nd, 4th Su, 11am.  
Hot Meal: 3rd Su, 2pm.  
Hot Brunch: 3rd Su, 10am.  
Breakfast and clothes: Last Su of month, Nov-Mar, 8am.*
- Seattle Indian Center.....206.329.8700  
611 12th Ave S, Seattle  
*M-F, Noon-1:15pm.*
- Union Gospel Mission.....206.622.5177  
318 2nd Ave Ext S, Seattle  
*Daily, 7-8:30am, noon-12:45pm, 5-5:30pm, 5:30-6:30pm. No noon meal Su.*

# Seattle

# Women's

## Emergency Services



May 2012



Brochures updated quarterly at  
[www.crisisclinic.org/Brochures.html](http://www.crisisclinic.org/Brochures.html)

## FOOD BANKS

*The following food banks serve specific geographic regions.  
Call ahead for specific geographic eligibility requirements.*

ACRS Food Bank.....	206.292.5714
919 S King St, Seattle	
<i>W F, 11:30am-1pm. Provides culturally appropriate Asian-Pacific foods. Tickets to hold spot starting at 9am.</i>	
CAMP.....	206.812.4970
722 18th Ave, Seattle	
<i>W, noon-4pm. Th F, 9am-1pm.</i>	
Cherry St. Food Bank.....	206.625.0755
711 Cherry St, Seattle	
<i>M W, 9am-5:30pm. F, 9am-5pm. Provides meat products on last two serving days of the month. No eligibility restrictions.</i>	
Food Bank at St. Mary's.....	206.324.7100 ext. 18
611 20th Ave S, Seattle	
<i>Tu Th Sa, 10am-1pm.</i>	
Immanuel Community Services.....	206.622.1930
1215 Thomas St, Seattle	
<i>Last two Fridays each month, 9-10:30am. No eligibility restrictions.</i>	
Morris Polack Food Bank.....	206.461.3240
1601 16th Ave, Seattle	
<i>W F, 10-11:45am, Th, 2-3:45pm.</i>	
Pike Market Senior Center.....	206.626.6462
1531 Western Ave, 5th Floor, Seattle	
<i>Tu Th, 10am-1pm. Call ahead for food bags: M-F, 8:30am-1pm.</i>	
Puget Sound Labor Agency.....	206.448.9277
2800 1st Ave, Seattle	
<i>M F, 8am-noon.</i>	
Salvation Army.....	206.447.9944
1101 Pike St, Seattle	
<i>Tu, 9-11am, 1-3pm. W-F, 9-11:30, 1-3pm.</i>	
Seattle Indian Center.....	206.329.8700
611 12th Ave S, Ste 300, Seattle	
<i>Tu Th, 1:30-3:30pm</i>	
YWCA Central Area Food Bank.....	206.957.2020 ext. 320
1025 E Fir St, Seattle	
<i>W, 2-3pm.</i>	

## DROP-IN CENTERS

Angeline's.....	206.436-8650
2030 3rd Ave, Seattle	
<i>Daily, 8am-6pm. Offers hygiene facilities, health care and mental health counseling, access to phones and computers, and daily meals.</i>	
Bread of Life Mission.....	206.682.3579
97 S Main St, Seattle	
<i>M-F, 10am-4pm. Provides a center for homeless men and women to rest during the day. Light refreshments provided.</i>	
Compass Housing Alliance - Adult Service Center.....	206.357.3190
2015 3rd Ave, Seattle	
<i>Daily, 10:30am-7pm. Provides showers, laundry facilities, and phone use. Also provides information and referral to shelter, housing, health services, and public benefits.</i>	
Compass Housing Alliance.....	206.357.3180
210 Alaskan Way S, Seattle	
<i>Showers/Restrooms: M-F, 7am-2pm. Laundry: M-F, 7am-12:45pm. Offers restrooms, showers, laundry services, and toiletries.</i>	
DESC.....	206.464.1570
517 3rd Ave, Seattle	
<i>Daily, 7am-7pm. Provides showers, restrooms, and hygiene supplies. Offers a place to relax indoors, with TV.</i>	
Lazarus Center.....	206.623.7219
416 2nd Ave, Seattle	
<i>Daily, 1-6:30pm. Ages 50 &amp; over, photo ID required. Provides a recreational library and computer room with games and TV.</i>	
Elizabeth Gregory Home.....	206.523.6031
1604 NE 50th, Seattle	
<i>M-F, 9am-6pm. Offers laundry facilities and hygiene kits. Provides use of computers, internet, fax, phone and copy machine for use with job and housing searches. Provides kitchen and cooking supplies. Offers optional ongoing case management services.</i>	
Mary's Place.....	206.621.8474
314 Bell St, Seattle	
<i>M-F, 7am-3:30pm. Provides showers, laundry, and daily self-serve breakfast and lunch. Offers referrals and assistance with job and housing searches and basic nurse services.</i>	
Urban Rest Stop.....	206.332.0110
1924 9th Ave, Seattle	
<i>M-F, 5:30am-9:30pm. OCT-MAY: Sa Su, 8am-3pm. JUN-SEP: Sa Su, 8am-5pm. Provides restrooms, showers, and laundry facilities. Also distributes limited hygiene items.</i>	

## CLOTHING

Bread of Life Mission.....	206.682.3579
97 S Main, Seattle	
<i>Distribution: Tu Th Sa, 10-11:30am. Line up at 10am for a number.</i>	
Emerald City Community - 7th Day Adventist Church.....	206.322.0717
801 25th Ave S, Seattle	
<i>Sa, 9-10am.</i>	
Jubilee Women's Center.....	206.324.1244
5972 4th Ave S, Seattle	
<i>Provides women's casual, business clothing and accessories (such as shoes, belts, make-up, purses, scarves and hats) and some personal hygiene items. Must call to make an appointment.</i>	
Lazarus Center.....	206.623.7219
416 2nd Ave, Seattle	
<i>M W, 11am-1pm. Ages 50+. Photo ID required.</i>	
Queen Anne Helpline.....	206.282.1540
311 W McGraw St, Seattle	
<i>M Tu Th F, 10am-2pm. Call for appointment.</i>	
St. Francis House.....	Walk in only
169 12th Ave, Seattle	
<i>M-F, 10am-2:30pm. Can visit once every 30 days.</i>	
St. Vincent de Paul-Clothing Bank.....	206.767.9975 x124
5972 4th Ave S, Seattle	
<i>Tu Th, 11am-2pm.</i>	
<i>Ages 18-25. Cannot serve anyone younger than 18. ID req'd.</i>	

## DAY LABOR

Casa Latina.....	206.956.0779
317 17th Ave S, Seattle	
<i>M-F, 6-10:30am. Sa, 6:30-11:30am. No ID or SSN required. Call for upcoming orientation time.</i>	
Millionair Club.....	206.728.5627
2515 Western Ave, Seattle	
<i>Call for orientation times. For work walk in between 6-10am. Ages 18+. ID and Social Security Card required. Background check performed. No felonies. Call to register.</i>	

## STORAGE

SHARE/WHEEL.....	206.623.0390
963 Mercer St, Seattle	
<i>Walk-in: M-F, 6:30-8:30am. Sa Su, 7-9am. Day and long-term storage in exchange for labor.</i>	

